



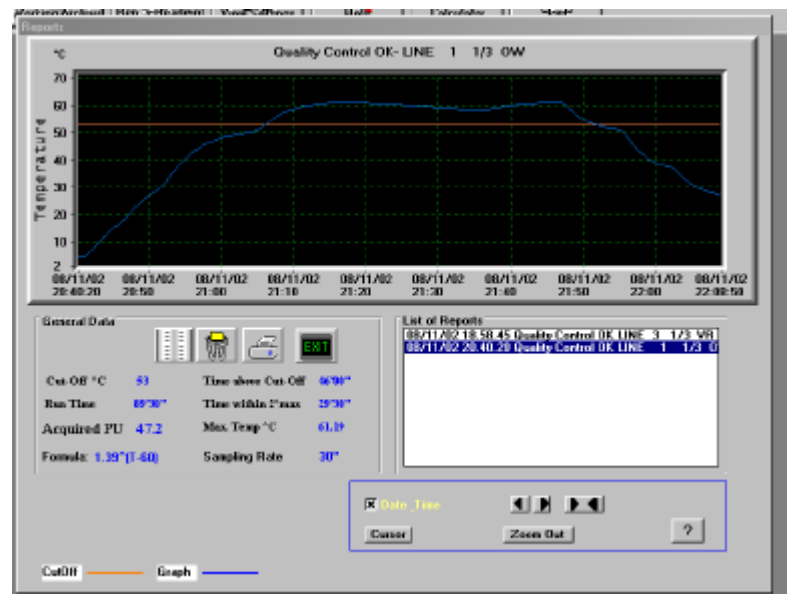
TDL/DS Thermologgers

The **TDL/DS-B** Thermologger new series of temperature data loggers utilise *state-of-the-art* technology to monitor Pasteurisation and Sterilisation temperatures during the process, in cans, bottles, jars or other containers in tunnels up to 100°C.

The system consists of the TDL thermologger, the EasyGraph software, the Smartcable and a selectable length probe. A series of optional accessories enable the user to verify the accuracy of all measurements.

The "Pasteurising Reporter" provides a report that can be printed out in graphical or tabular format, plus calculating and reporting Pasteurisation Units (PU), T max, pasteurising time and time above a pre-set temperature.

The recorded data can then be exported into other programs for further analysis if required.



TDL Thermologger Monitoring system

- Accurate measurements for quality control purposes.
- Fits into standard product cans.
- Extremely easy to use
 1. Insert the probe to start.
 2. Detach the probe to stop.
 3. Print the report.
- No switches.
- Visible working status indication.
- Maintenance free.
- Lifetime battery more than **8 years** depending on sampling rate.
- Automatic battery level checking.
- Software Low battery level indicator.
- Easy user replaceable Battery.
- Interchangeable Temperature Probes.
- Accuracy can be verified by the user, no need to send it back to the factory.
- Calibration verification of each temperature probe.
- Heading titles can be changed.
- Up to 180 days of process recording (with one channel and 2 hour of sampling rate).
- Sampling rate from 1 second to 2 hours.

EasyGraph software

Very powerful and easy to apply.

- print Reports with graphs or tables.
- Units (PU, FO), T max, time, etc.
- archive data for further analysis.
- export the data into other programs such as spreadsheets, databases, word processors.
- change the units from °C or °F.
- change the cutoff temperature value.
- set alarms for out of range measurements.
- verify the accuracy of the recorder.
- compensate for long term temperature drift for each probe.
- change the calculation formula.
- change the calculation units.
- set the sampling rate.

ACCESSORIES



Temperature Probe

The temperature probes are made of AISI 316 stainless steel in these standard lengths: 20, 90, 110, 190, 230, 270, 300 mm. It use a special calibrated digital sensor (accuracy better than 0.2°C @ 60°C).

Custom Probe lengths and shape can be supplied on request.

Order Code :TPSxxx/DS (xxx is the lengths in millimetres)

C-210/B Smart Cable

The C-210/B Smart Cable connects the recorder to the PC serial port. A red/green led on the connector shows the serial port's working status.

Order Code :C-210/B



Probe Adapters

To hold it in the right position there are two kinds of adapter: The RH-rubber adapter for bottle and the SH stainless steel adapter for can or other containers.

Order Code : RH-55 (rubber adapters) SH-40/U (stainless steel adapter)

CA-300/B Calibration Adapter

The CA-300/B Calibration Adapter for real time measurements and probes calibration.

Order Code :CA-300/B



EasyGraph Software

Reads the TDL data. Provides a print out and calculates various parameters and enables the user to easily analyse the recorded data

Available for: Windows 98/ME/NT/2000/XP Order Code :EG-1-F

Characteristics

Battery	Lithium High Temperature, user replaceable. Order code: BT/85, BT/100
Battery Life	More then 8 year (depending on sampling rate and initial battery's state).
Auto shut off	At memory full.
Auto sleep mode	When connected to the PC and after 1 minute with no communication
Sampling Rate	From 1 second to 2 hour.
Recording Time	Up to 180 days of data at a sampling rate of 2 hour.
Channels	One external with detachable temperature probe plus one optional internal sensor.
PC Requirement	One serial port, Windows /98/ME/NT/2000/XP
PC Connection	Via the C-210 Smart Cable that checks and displays the state of the serial port.
Case	AISI 316 stainless steel. Size: 70x30 mm. Weight 180 grams.
Temperature Probe	Interchangeable AISI 316 stainless steel.
Temperature Sensor	Calibrated Digital Sensor (automatic compensation)

Data Logger Model

Temperature Range

Resolution

Overall Accuracy

Maximum Operating Temperature

TDL/85/DS/B

-20 to 85°C

0.05°C

± 0.2°C

85°C (185°F)

TDL/100/DS/B

-20 to 100°C

0.05°C

± 0.2°C

100°C 212°F

Every effort has been made to ensure the accuracy of these specifications: however we do not accept responsibility for damage, injury, loss or expense resulting from errors or omissions and we reserve the right of amendments without notice.



Tower Gate Place, Tal-Qroqq Street, MSD 04 Msida -Malta
tel +(356) 2131 3060 Fax: +(356) 2131 3064
www.ies-lab.com email: info@ies-lab.com

