

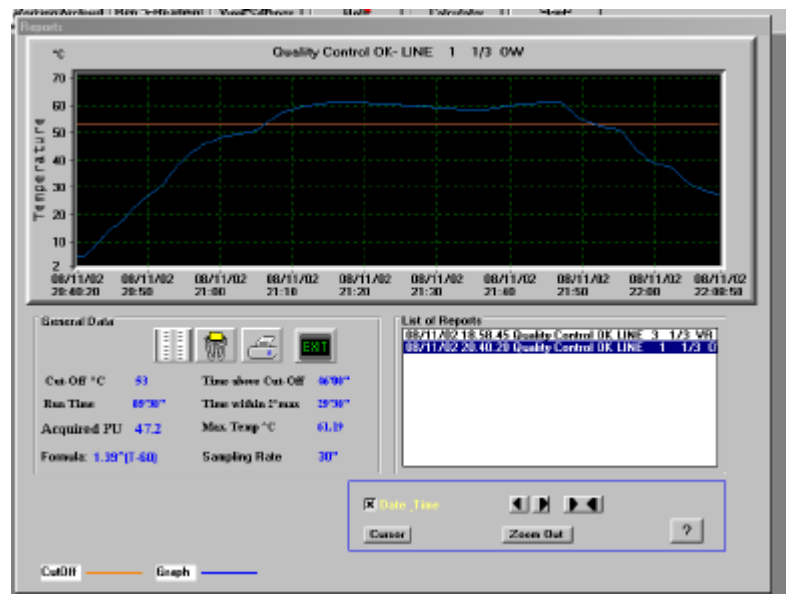


The **TDL-130** Thermlogger new series of temperature data loggers utilise *state-of-the-art* technology to monitor the sterilisation temperatures during the process, in cans, bottles, jars or other containers in tunnels or autoclave up to 130°C.

The system consists of the TDL thermlogger, the WinPasteur software, the Smartcable and a selectable length probe. A series of optional accessories enable the user to verify the accuracy of all measurements.

The “Pasteurising Reporter” provides a report that can be printed out in graphical or tabular format, plus calculating and reporting Pasteurisation Units (PU), T max, pasteurising time and time above a pre-set temperature.

The recorded data can then be exported into other programs for further analysis if required.



### TDL Thermlogger Monitoring system

- Accurate measurements for quality control purposes.
- Fits into standard product cans.
- Extremely easy to use
  1. Insert the probe to start.
  2. Detach the probe to stop.
  3. Print the report.
- No switches.
- Visible working status indication (\*).
- Maintenance free.
- Lifetime battery more than **1 years** depending on sampling rate.
- Automatic battery level checking.
- Software Low battery level indicator.
- Easy user replaceable Battery.
- Interchangeable Temperature Probes.
- Accuracy can be verified by the user, no need to send it back to the factory.
- Calibration verification of each temperature probe.
- Heading titles can be changed.
- Up to 80 days of process recording (with one channel and 1 hour of sampling rate).
- Sampling rate from 1 second to 1 hours.

### WinPasteur software

Very powerful and easy to apply.

- print Reports with graphs or tables.
- Units (PU, FO), T max, time, etc.
- archive data for further analysis.
- export the data into other programs such as spreadsheets, databases, word processors.
- change the units from °C or °F.
- change the cutoff temperature value.
- set alarms for out of range measurements.
- verify the accuracy of the recorder.
- compensate for long term temperature drift for each probe.
- change the calculation formula.
- change the calculation units.
- set the sampling rate.

# ACCESSORIES



## Temperature Probe

The temperature probes are made of AISI 316 stainless steel in these standard lengths: 20, 90, 110, 190, 230, 270, 300 mm. It use a high precision RTD (PT100) four wire grade A sensor (accuracy according to ITS90  $\pm 0.15^{\circ}\text{C}$  @  $0^{\circ}\text{C}$ ,  $\pm 0.27^{\circ}\text{C}$  @  $60^{\circ}\text{C}$ ). Custom Probe lengths can be supplied on request.

Order Code :TPSxxx (xxx is the lengths in millimetres)

## C-210/B Smart Cable

The C-210/B Smart Cable connects the recorder to the PC serial port. A red/green led on the connector shows the serial port's working status.

Order Code :C-210/B



## CP-60 Check Plug

This Check plug is used with the CA-300/A calibration adapter to verify automatically the accuracy of the recorders. It simulates to an accuracy of  $\pm 0.1^{\circ}\text{C}$  a probe measuring a temperature of  $60.0^{\circ}\text{C}$  ( $140^{\circ}\text{F}$ ).

Order Code :CP-60

## CA-300/B Calibration Adapter

The CA-300/B Calibration Adapter for real time measurements and probes calibration. Order Code :CA-300/B



## WinPasteur Software

Reads the TDL data. Provides a print out and calculates various parameters and enables the user to easily analyse the recorded data

Available for: Windows 98/ME/NT/2000/XP Order Code :WP-1

## Characteristics

Battery	Lithium High Temperature, user's replaceable. Order code: BT/130
Battery Life	More then 1 year (depending on duty cycle).
Sampling Rate	From 1 second to 1 hour.
Recording Time	Up to 85 days at a sampling rate of 1 hour.
PC Requirement	one serial port or USB/RS232 adapter, Windows 98/ME/NT/2000/XP
PC Connection	Via the C-210 Smart Cable that checks and displays the state of the serial port.
Case	AISI 316 stainless steel, pressure Size: 78x36 mm.
Temperature Probe	Interchangeable AISI 316 stainless steel.
Temperature Sensor	Four wire PT100 grade A DIN (accuracy according to ITS90: $\pm 0.15^{\circ}\text{C}$ @ $0^{\circ}\text{C}$ , $\pm 0.27^{\circ}\text{C}$ @ $60^{\circ}\text{C}$ )

## Data-Logger Model

Temperature Range

Resolution

Accuracy \*

Maximum Operating Temperature

TDL/130

0 to  $130^{\circ}\text{C}$

$0.13^{\circ}\text{C}$

$\pm 0.2^{\circ}\text{C}$

$130^{\circ}\text{C}$  (  $266^{\circ}\text{F}$  )

\*@  $60^{\circ}\text{C}$  (with software compensation)

Every effort has been made to ensure the accuracy of these specifications: however we do not accept responsibility for damage, injury, loss or expense resulting from errors or omissions and we reserve the right of amendments without notice.



Tower Gate Place, Tal-Qroqq Street  
MSD 04 Msida - Malta  
tel +(356) 2131 3060 Fax: +(356) 2131 3064  
www.ies-lab.com email: info@ies-lab.com

