



PRU-2000

The **PRU-2000** new series of temperature data loggers utilise *state-of-the-art* technology to monitor pasteurisation temperatures during the process, in cans, bottles, jars or other containers in tunnels up to 85°C.

The system consists of the PRU-2000 thermollogger, the EasyGraphr software, the Smartcable and a selectable length probe. A series of optional accessories enable users to verify the accuracy of all measurements.

The "Pasteurising Reporter" provides a report that can be printed out in graphical or tabular format, plus calculating and reporting Pasteurisation Units (PU), T max, pasteurising time and time above a preset temperature.

The recorded data can then be exported into other programs for further analysis if required.

With a special combined temperature-pressure probe and specific accessories, the PRU-2020/P can also monitor the pressure inside the bottles or cans, during the pasteurisation process.

PRU-2000 logger Monitoring system

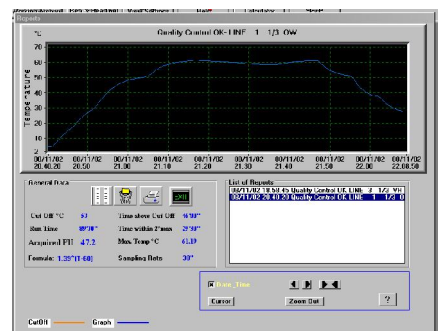
- ♦ Accurate measurements for quality control purposes.
- ♦ No switches.
- ♦ Maintenance free.
- ♦ Automatic battery level checking.
- ♦ Software Low battery level indicator.
- ♦ Easy user replaceable Battery. .
- ♦ Accuracy can be verified by the user, no need to send it back to the factory.
- ♦ Heading titles can be changed.
- ♦ Sampling rate from 1 second to 1 hour.



EasyGraph software

Very powerful and easy to apply.

- ♦ print Reports with graphs or tables..
- ♦ archive data for further analysis.
- ♦ export the data into other programs such as spreadsheets, databases, word processors.
- ♦ change the units from °C or °F.
- ♦ verify the accuracy of the recorder.
- ♦ probe's calibration
- ♦ change the sampling rate.
- ♦ change the calculation formula.
- ♦ change the calculation units.
- ♦ set the sampling rate.



Characteristics

Battery
Battery life time
Sampling Rate
Recording Time
PC Requirement
PC Connection
Case
Order code

Special High Temperature Lithium 3.6V user's replaceable. **Order code: HTB/3**
up to 8 years depending on model and duty cycle
From 1 second to 1 hour.
Up to 80 days @ 1 hour sampling rate and 1 channel activated.
one serial port, Windows 98/ME/NT/2000/XP
Via the C-210 Smart Cable that checks and displays the state of the serial port.
Stainless steel.
PRU-2010/DS (1 channel temperature) **PRU-2020/DS** (2 channels temperature)
PRU-2020/P (2 channels temperature and pressure)

ACCESORIES



Combined pressure and temperature probe

This probe is made of AISI 316 stainless steel . For the temperature it use a special calibrated digital sensor (range -20 to 85°C, accuracy better than 0.2°C @ 60°C). For the pressure it uses a new special miniature transducer (range 0 to 16Bar accuracy better than 0.5%). Length 120 mm for 330cl. can. Other length according to the bottle or can size.

Custom Probe lengths can be supplied on request.

Order Code : DPTPxxx/DS (xxx is the lengths in millimetres)

Temperature Probe

The temperature probes are made of AISI 316 stainless steel in these standard lengths: 20, 90, 110, 190, 230, 270, 300 mm. It use a special calibrated digital sensor (accuracy better than 0.2°C @ 60°C).

Custom Probe lengths and shape can be supplied on request.

Order Code : TPSxxx/DS (xxx is the lengths in millimetres)



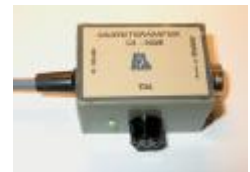
C-210/B Smart Cable

The C-210/B Smart Cable connects the recorder to the PC serial port. A red/green led on the connector shows the serial port's working status.

Order Code :C-210/B

CA-300/B Calibration Adapter

The CA-300/B Calibration Adapter for real time measurements and probes calibration. Order Code :CA-300/B



Probe Adapters

To hold it in the right position there are two kinds of adapter: The RH-rubber adapter for bottle and the SH stainless steel adapter for can or other containers.

Order Code : RH-35, RH-55 (rubber adapters) SH-40/U (stainless steel adapter)

KSCA/330 - adapter for can

Stainless steel adapter for 330cl. cans.

It holds the can and the probe in the correct position without loss of pressure.

Also available for bottles and 500cl. Cans

Order Code :KSCA/330C





PRU-2010 with temperature probe and rubber adapter for bottle



PRU-2020/P - combined probe for temperature and pressure and can's adapter



Combined probe for temperature and pressure with can's adapter

