



Thermologger



The **DL-1** Thermologger is a new temperature data loggers to monitor **temperature**.

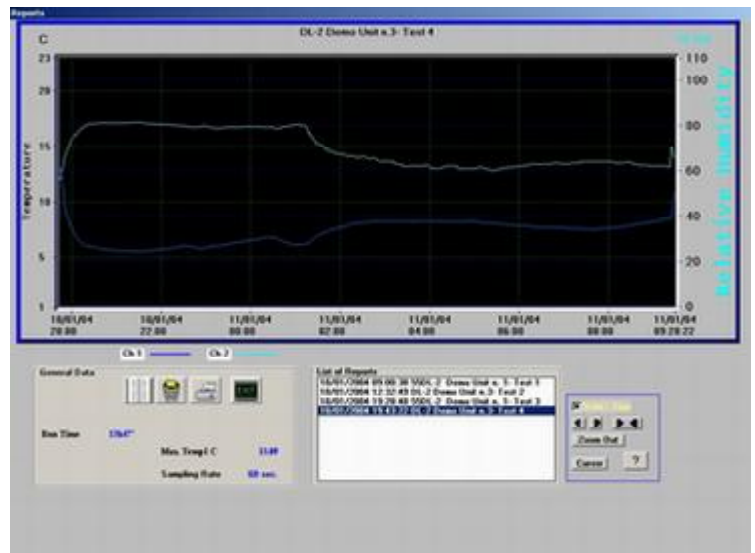
The system consists of the DL-1 datalogger, the EasyGraph software, the Smartcable to connect the DL-1 to the PC.

A report can be printed out in graphical or tabular format. The recorded data can then be exported into other programs for further analysis if required.



DL-1 Monitoring system

- ♦ Accurate measurements for quality control purposes.
- ♦ Extremely easy to use
- ♦ No switches.
- ♦ Visible working status indication.
- ♦ Maintenance free.
- ♦ Easy software calibration.
- ♦ Lifetime battery more than 8 year depending on duty cycle.
- ♦ Automatic battery level checking.
- ♦ Easy user replaceable Battery.
- ♦ Self contained Temperature sensor.
- ♦ Optional external Temperature sensor.
- ♦ Crystal controlled Real Time clock .
- ♦ Up to 14 years of recording at 2 hour sampling rate.
- ♦ Sampling rate from 1 second to 2 hours.



EasyGraph software

Very powerful and easy to apply.

- ♦ print Reports with graphs or tables.
- ♦ archive data for further analysis.
- ♦ export the data into other programs such as spreadsheets, databases, word processors.
- ♦ set alarms for out of range measurements.
- ♦ change the sampling rate.
- ♦ change the calculation units.

Distributor:

Characteristics

Battery	Lithium 3V AA size user's replaceable. Order code: BT/3
Estimated Battery Life	More then 8 year (depending on duty cycle).
Sampling Rate	From 1 second to 2 ours.
PC Requirement	IBM compatible, one serial port, Windows 98/ME/NT/2000/XP
PC Connection	Via C-100 serial cable.
Case	ABS plastic. Size: 65x65x28 mm. Weight 75 grams.
Temperature Range	-40 to + 85°C ± 0.5° @ 12 bit of resolution (standard model DL1/s)
Recording Time	Up to 7 years at a sampling rate of 2 hours.
Order code	DL-1-x-y-z. x: 1 = one channel, 2 = two channels y: 1 = up to 3.7, 2 = 7.3, years years of one channel continuous recording. z: 1 = ± 0.5°C accuracy 2 = ± 0.2°C